



# Brunswick County Justice: Past, Present, and Future

---

- Jason Disbrow, Senior Resident Superior Court Judge of Brunswick County
- Jon David, District Attorney- Brunswick, Bladen & Columbus Counties

St. James October 5, 2023



Senior Resident  
Superior Court Judge  
Jason Disbrow

---

# District Attorney Jon David







# View from 30,000 feet:



## 100 Counties in North Carolina

- Court System

- 100 Courthouse only a horse back ride away!
- Became unified court system in 1966
- 43 Elected District Attorneys and approximately 100 Superior Court Judges

# The Past

Corruption in Office

The election of 2010

The “Law and Order” Team

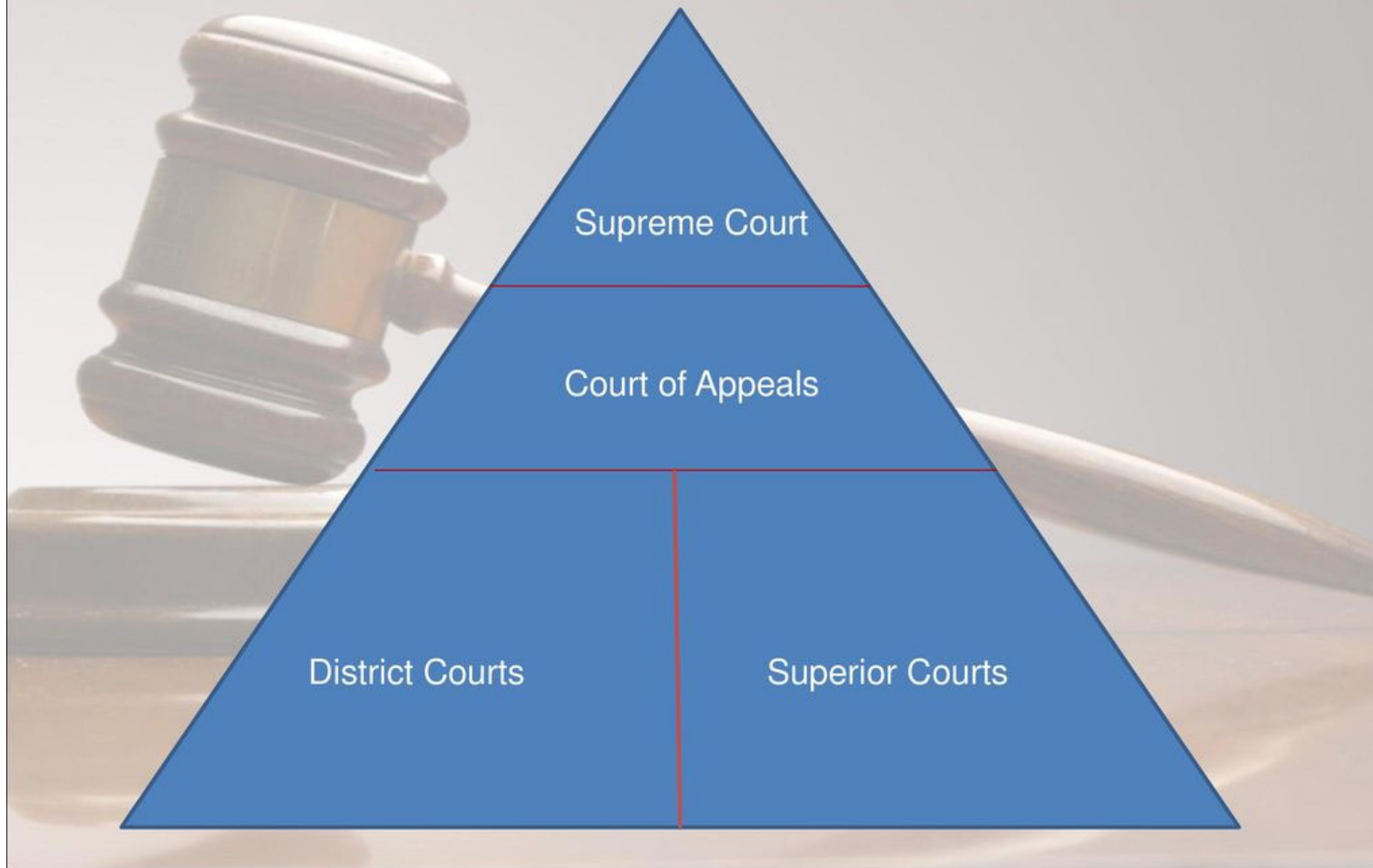
- Sheriff- John Ingram
- Clerk- Jim MacCallum
- DA- Jon David

# The Present

- Sheriff Brian Chism
- Clerk Katie Madon
- Senior Resident Superior Court Judge Jason Disbrow
- Chief District Court Judge Scott Ussery
- District Attorney Jon David



# North Carolina State Courts





# Structure of the Justice System

District Attorney- Jon David

## Judges

- Supreme Court- Chief Justice Paul Newby, Head of AOC
- Court of Appeals
- Superior Court- Jason Disbrow
- District Court- Scott Ussery (Chief), Pauline Hankins, Sara McPherson, Brian Wilson, Calvin Chandler, Will Callahan, Heath Nance
- Magistrate Courts- Nominated by Clerk, appointed by Senior Resident, supervised by Chief District Court Judge

Clerk of Court- Katie Madon

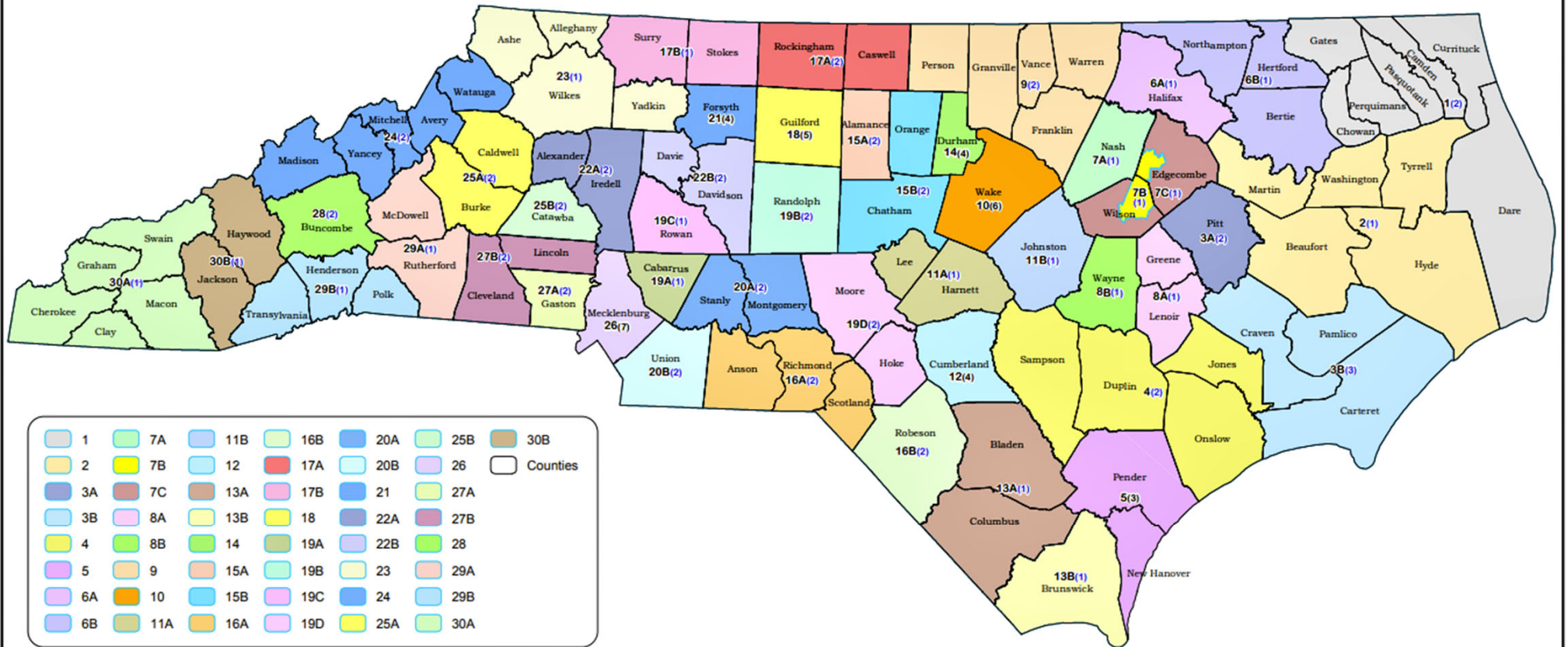
# NC District Court

- Created in 1967, district courts hear cases involving civil matters <\$25,000, misdemeanor criminal offenses, all family law/domestic matters and juvenile matters;
- Divided into approximately 42 districts across the state and sit in the county seat of each county (about 320 judges statewide);
- Each district court has a chief district court judge who manages the administrative duties of the court;
- Elected to 4 year terms;
- Handles 75-80% of **ALL** legal matters in the state;
- Convenes court virtually every day

# NC Superior Court

- Trial court of general jurisdiction in NC established in 1777. Until the creation of the Supreme Ct., Superior Ct. judges functioned as the state's only appellate court;
- It hears most felony cases. Also all civil matters with an amount in controversy exceeding \$25,000;
- It also handles appeals from administrative agencies (i.e. DMV) and appeals of misdemeanors;
- Divided into 5 divisions/48 districts with about 100 judges statewide;
- Rotate (generally) from district to district every 6 months;
- Elected to 8 year terms
- Weekly sessions that begin on Monday of each week

# North Carolina Superior Court Districts



1	7A	11B	16B	20A	25B	30B
2	7B	12	17A	20B	26	Counties
3A	7C	13A	17B	21	27A	
3B	8A	13B	18	22A	27B	
4	8B	14	19A	22B	28	
5	9	15A	19B	23	29A	
6A	10	15B	19C	24	29B	
6B	11A	16A	19D	25A	30A	

Number of Judges is shown in parentheses





# NC Court of Appeals

- Created in 1967 - the intermediate appellate court that reviews cases/decisions occurring in trial courts for errors of law or legal procedure;
- Vast majority of cases appealed from Superior and District courts are heard by the Ct. of Appeals;
- Exceptions: Capital murder appeals go directly to Supreme Court, Termination of Parental Rights appeals (TPRs) from Juvenile Court go directly to Supreme Court (as of 2020);
- Fifteen (15) judges elected to eight (8) year terms (staggered);
- Three (3) judge panels decide cases;
- Typically meet 5 days per month (in groups of 3) for oral arguments

# NC Supreme Court

- It was the only appellate court in the state up until the Court of Appeals was created in the 1960's;
- It consists of six (6) associate justices and one (1) chief justice. Paul Newby is the current Chief Justice;
- The primary function of the Supreme Court is to settle questions of law that arise in the lower courts and before state administrative agencies (i.e. Department of Transportation);
- It was established in 1818;
- Judges are elected to eight (8) year terms in partisan elections;
- Convene for oral arguments typically 9 times per year but also decide many cases without oral argument

## Structure of Law Enforcement

Brunswick County Sheriff's Office- Sheriff Brian Chism

Municipal (11) Police Departments- Leland, Northwest, Navassa, Southport, Boiling Spring Lakes, Oak Island, Holden, Ocean Isle Beach, Sunset, Shallotte

State Agencies- NC Highway Patrol, State Bureau of Investigations (SBI), Wildlife, ALE, Marine Fisheries

Federal Partners- FBI, DEA, ATF, Secret Service, Homeland Security

Justice in the  
age of  
pandemic





The numbers  
tell a story....

Statewide, pending cases have been remarkably stable year over year

Equilibrium between filed cases versus disposed cases

Early in Pandemic- Supreme Court issued statewide Order halting jury trials

25% spike in pending cases during the Covid-19 Pandemic

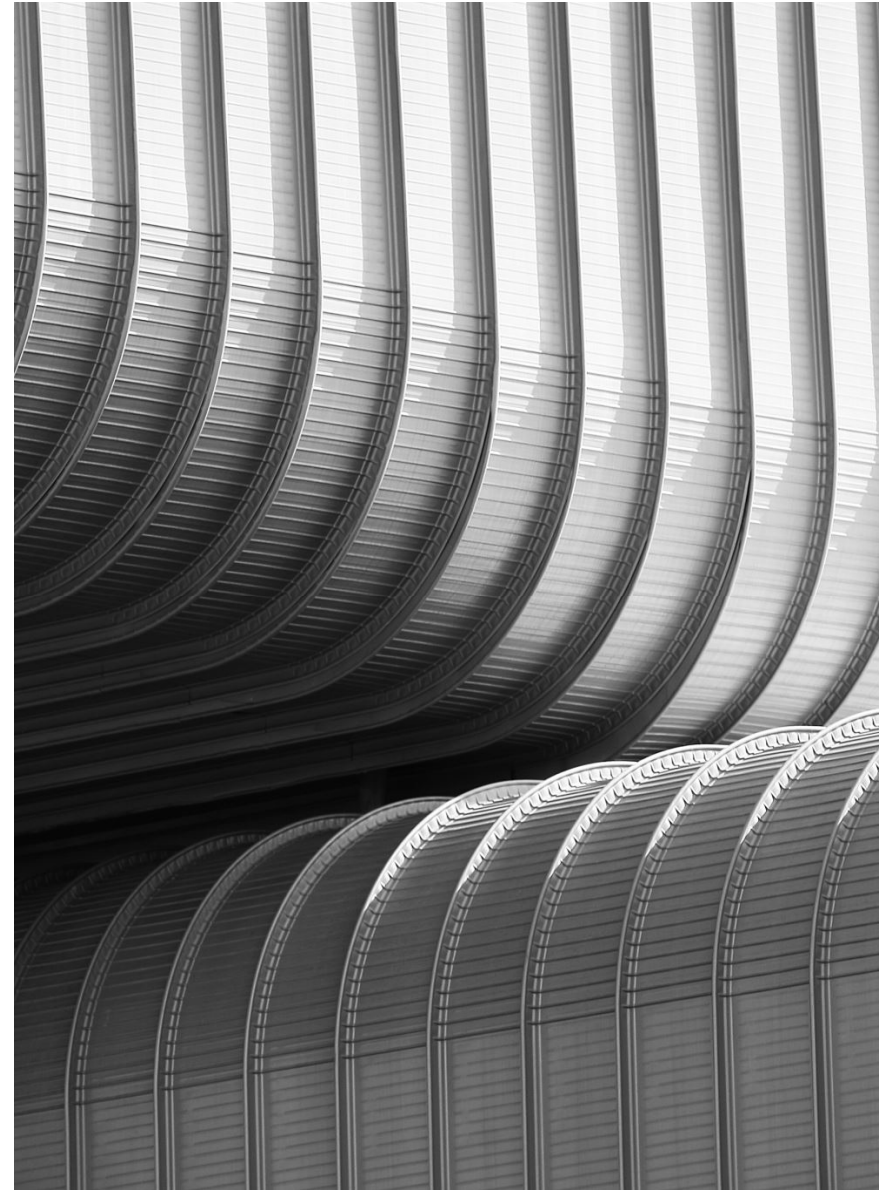
# The plan

Chief Justice Paul  
Newby Elected Jan  
2021

Immediately signed  
court order lifting  
prohibition on Jury  
trials

Listened to innovative  
ideas from the big 12  
counties=50% of  
population

Local action plan=  
transferred authority  
to local elected  
officials



# The remedy

- Data driven analysis
- Resume Jury trials and pushed biggest cases in front of the community
- Disposition of low level cases at early stage
- Save valuable court time for cases of actual consequence
- Use of innovative new systems for efficient disposition of cases
  - Traffic Court
  - Felony District Court

# The Results

We have completely eliminated the Covid backlog

9% reduction of cases statewide vs. pre-pandemic numbers!

More efficient systems and improved working relationships among leaders

Exceptional results in ground breaking prosecutions:

- Tripp/Noffsinger- Murder conviction despite Double Jeopardy/SOL claims/Proximate cause
- Ferster- First conviction statewide for felony death for boating while impaired= Triple Homicide
- Brian O'Daniels- Murder conviction for 25 year old cold case from BSL



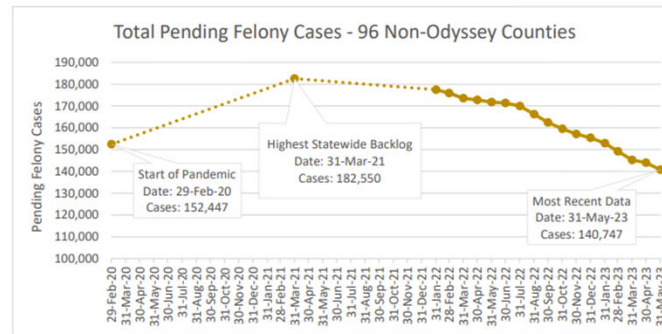


## PENDING FELONY CASES

Comparison of Cases as of February 29, 2020  
through May 31, 2023

Prepared by  
Research, Policy, and Planning

### Total Pending Felony Cases - 96 Non-Odyssey Counties Trends over Time





Prepared by  
Research, Policy, and Planning

**Total Pending Felony Cases**  
County Comparison - Sorted Alphabetically

County	Felony Cases Pending as of 2/29/2020	Felony Cases Pending as of 3/31/2021	Felony Cases Pending as of 5/31/2023	% Change from CY2020 to CY2021	% Change from CY2021 to Current	% Change from CY2020 to Current
Alamance	2,725	3,608	3,436	32.4%	-4.8%	26.1%
Alexander	589	866	599	47.0%	-30.8%	1.7%
Alleghany	203	229	196	12.8%	-14.4%	-3.4%
Anson	420	501	445	19.3%	-11.2%	6.0%
Ashe	529	583	346	10.2%	-40.7%	-34.6%
Avery	267	332	230	24.3%	-30.7%	-13.9%
Beaufort	1,109	1,033	846	-6.9%	-18.1%	-23.7%
Bertie	366	434	384	18.6%	-11.5%	4.9%
Bladen	532	534	507	0.4%	-5.1%	-4.7%
Brunswick	1,741	1,678	1,024	-3.6%	-39.0%	-41.2%
Buncombe	5,004	6,192	4,553	23.7%	-26.5%	-9.0%
Burke	710	778	723	9.6%	-7.1%	1.8%
Cabarrus	1,337	2,169	1,935	62.2%	-10.8%	44.7%
Caldwell	1,354	1,264	1,414	-6.6%	11.9%	4.4%
Camden	35	50	107	42.9%	114.0%	205.7%
Carteret	1,619	1,944	1,463	20.1%	-24.7%	-9.6%
Caswell	280	300	271	7.1%	-9.7%	-3.2%
Catawba	2,367	2,823	2,203	19.3%	-22.0%	-6.9%
Chatham	666	802	555	20.4%	-30.8%	-16.7%
Cherokee	492	705	537	43.3%	-23.8%	9.1%
Chowan	205	235	122	14.6%	-48.1%	-40.5%
Clay	218	248	195	13.8%	-21.4%	-10.6%
Cleveland	2,500	2,975	2,703	19.0%	-9.1%	8.1%
Columbus	1,201	1,534	1,195	27.7%	-22.1%	-0.5%
Craven	2,201	2,612	2,549	18.7%	-2.4%	15.8%
Cumberland	7,350	6,729	5,608	-8.4%	-16.7%	-23.7%
Currituck	222	187	162	-15.8%	-13.4%	-27.0%
Dare	509	433	380	-14.9%	-12.2%	-25.3%
Davidson	2,242	2,978	2,700	32.8%	-9.3%	20.4%

\*\*\*



**PENDING FELONY CASES**

Comparison of Cases as of February 29, 2020, March 31, 2021, and May 31, 2023

Prepared by  
Research, Policy, and Planning

County	Felony Cases Pending as of 2/29/2020	Felony Cases Pending as of 3/31/2021	Felony Cases Pending as of 5/31/2023	% Change from CY2020 to CY2021	% Change from CY2021 to Current	% Change from CY2020 to Current
Wilson	1,731	2,206	1,811	27.4%	-17.9%	4.6%
Yadkin	884	1,014	342	14.7%	-66.3%	-61.3%
Yancey	225	236	120	4.9%	-49.2%	-46.7%
<b>Total</b>	<b>152,447</b>	<b>182,550</b>	<b>140,747</b>	<b>19.7%</b>	<b>-22.9%</b>	<b>-7.7%</b>

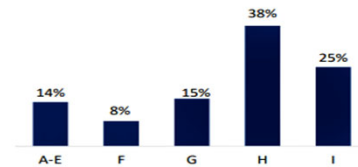
# Total Pending Felony Cases

# 2022 Summary of Findings

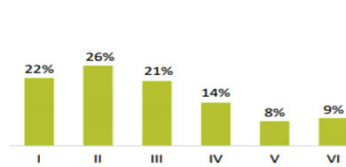
## SUMMARY OF FINDINGS FY 2022 FELONY CONVICTIONS

Sentences imposed for felony convictions are based on the Felony Punishment Chart, which takes into account offense seriousness and the offender's prior criminal record. During FY 2022, sentences for 25,760 felony convictions were imposed.<sup>2</sup> Two-thirds (63%) of felony convictions were for Class H and Class I offenses; most convictions (48%) were in Prior Record Levels I and II. Of the four crime types, non-trafficking drug offenses (32%) accounted for the largest percentage of felony convictions.

Convictions by Offense Class

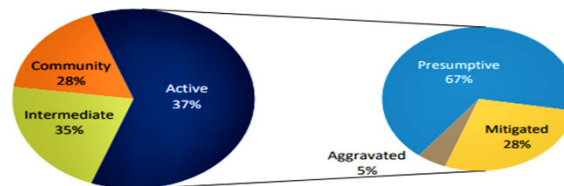


Convictions by Prior Record Level



Thirty-seven percent (37%) of felony convictions resulted in an Active punishment, 35% resulted in an Intermediate punishment, and 28% resulted in a Community punishment. Sixty-seven percent (67%) of all active sentences were within the presumptive range, 28% were within the mitigated range, and 5% were within the aggravated range. All offenders with an Intermediate punishment and 95% of offenders with a Community punishment received supervised probation. Overall, the average probation length was 25 months and the average minimum suspended sentence was 9 months.

Punishment Imposed

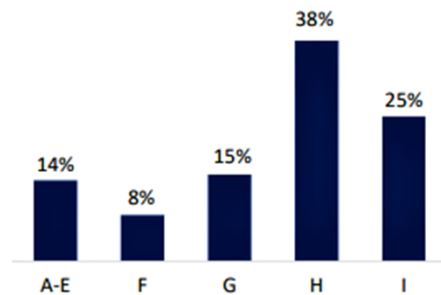


# Most convictions are low level felonies with probationary sentences

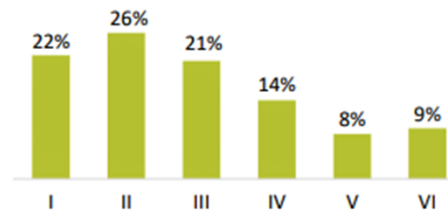
## Punishment Imposed by Offense Class and Prior Record Level

Figure 9 shows the percentage of convictions by offense class. The majority of felony convictions (63%) were for Class H and Class I offenses. (See Appendix C for sample offenses in each offense class and for the top 5 convictions in each offense class.) As shown in Figure 10, the majority of felony convictions (48%) were for offenders with Prior Record Levels I and II, including 16% for offenders with no prior record points. Seventeen percent (17%) of convictions were for offenders with the most serious prior criminal histories (Prior Record Levels V and VI).

**Figure 9: Convictions by Offense Class**



**Figure 10: Convictions by Prior Record Level**



SOURCE: NC Sentencing and Policy and Advisory Commission, FY 2022 Felony Statistical Report Data



## Offenses Committed on or after October 1, 2013

### Felony Minimum Sentences (in Months) and Dispositions

Offense Class	Prior Record Level					
	I 0-1 Pt	II 2-5 Pts	III 6-9 Pts	IV 10-13 Pts	V 14-17 Pts	VI 18+ Pts
<b>A</b>	<b>Death or Life Without Parole</b>					
	<b>Defendant Under 18 at Time of Offense: Life With or Without Parole</b>					
<b>B1</b>	<b>A</b>	<b>A</b>	<b>A</b>	<b>A</b>	<b>A</b>	<b>A</b>
	240 - 300	276 - 345	317 - 397	365 - 456	Life Without Parole	Life Without Parole
	<b>192 - 240</b>	<b>221 - 276</b>	<b>254 - 317</b>	<b>292 - 365</b>	<b>336 - 420</b>	<b>386 - 483</b>
	144 - 192	166 - 221	190 - 254	219 - 292	252 - 336	290 - 386
<b>B2</b>	<b>A</b>	<b>A</b>	<b>A</b>	<b>A</b>	<b>A</b>	<b>A</b>
	157 - 196	180 - 225	207 - 258	238 - 297	273 - 342	314 - 393
	<b>125 - 157</b>	<b>144 - 180</b>	<b>165 - 207</b>	<b>190 - 238</b>	<b>219 - 273</b>	<b>251 - 314</b>
	94 - 125	108 - 144	124 - 165	143 - 190	164 - 219	189 - 251
<b>C</b>	<b>A</b>	<b>A</b>	<b>A</b>	<b>A</b>	<b>A</b>	<b>A</b>
	73 - 92	83 - 104	96 - 120	110 - 138	127 - 159	146 - 182
	<b>58 - 73</b>	<b>67 - 83</b>	<b>77 - 96</b>	<b>88 - 110</b>	<b>101 - 127</b>	<b>117 - 146</b>
	44 - 58	50 - 67	58 - 77	66 - 88	76 - 101	87 - 117
<b>D</b>	<b>A</b>	<b>A</b>	<b>A</b>	<b>A</b>	<b>A</b>	<b>A</b>
	64 - 80	73 - 92	84 - 105	97 - 121	111 - 139	128 - 160
	<b>51 - 64</b>	<b>59 - 73</b>	<b>67 - 84</b>	<b>78 - 97</b>	<b>89 - 111</b>	<b>103 - 128</b>
	38 - 51	44 - 59	51 - 67	58 - 78	67 - 89	77 - 103
<b>E</b>	<b>I/A</b>	<b>I/A</b>	<b>A</b>	<b>A</b>	<b>A</b>	<b>A</b>
	25 - 31	29 - 36	33 - 41	38 - 48	44 - 55	50 - 63
	<b>20 - 25</b>	<b>23 - 29</b>	<b>26 - 33</b>	<b>30 - 38</b>	<b>35 - 44</b>	<b>40 - 50</b>
	15 - 20	17 - 23	20 - 26	23 - 30	26 - 35	30 - 40
<b>F</b>	<b>I/A</b>	<b>I/A</b>	<b>I/A</b>	<b>A</b>	<b>A</b>	<b>A</b>
	16 - 20	19 - 23	21 - 27	25 - 31	28 - 36	33 - 41
	<b>13 - 16</b>	<b>15 - 19</b>	<b>17 - 21</b>	<b>20 - 25</b>	<b>23 - 28</b>	<b>26 - 33</b>
	10 - 13	11 - 15	13 - 17	15 - 20	17 - 23	20 - 26
<b>G</b>	<b>I/A</b>	<b>I/A</b>	<b>I/A</b>	<b>I/A</b>	<b>A</b>	<b>A</b>
	13 - 16	14 - 18	17 - 21	19 - 24	22 - 27	25 - 31
	<b>10 - 13</b>	<b>12 - 14</b>	<b>13 - 17</b>	<b>15 - 19</b>	<b>17 - 22</b>	<b>20 - 25</b>
	8 - 10	9 - 12	10 - 13	11 - 15	13 - 17	15 - 20
<b>H</b>	<b>C/I/A</b>	<b>I/A</b>	<b>I/A</b>	<b>I/A</b>	<b>I/A</b>	<b>A</b>
	6 - 8	8 - 10	10 - 12	11 - 14	15 - 19	20 - 25
	<b>5 - 6</b>	<b>6 - 8</b>	<b>8 - 10</b>	<b>9 - 11</b>	<b>12 - 15</b>	<b>16 - 20</b>
	4 - 5	4 - 6	6 - 8	7 - 9	9 - 12	12 - 16
<b>I</b>	<b>C</b>	<b>C/I</b>	<b>I</b>	<b>I/A</b>	<b>I/A</b>	<b>I/A</b>
	6 - 8	6 - 8	6 - 8	8 - 10	9 - 11	10 - 12
	<b>4 - 6</b>	<b>4 - 6</b>	<b>5 - 6</b>	<b>6 - 8</b>	<b>7 - 9</b>	<b>8 - 10</b>
	3 - 4	3 - 4	4 - 5	4 - 6	5 - 7	6 - 8

**RANGE**  
Aggravated  
**PRESUMPTIVE**  
Mitigated

**DISPOSITION**  
C – Community  
I – Intermediate  
A – Active

# Sentencing Guidelines

# Top 5 Felony Convictions and Time to Sentencing

The top 5 most frequent felony convictions in FY 2013 and FY 2022 are displayed in Figure 42. Breaking and entering buildings was the top felony conviction in FY 2013 and possession of methamphetamine was the top felony conviction in FY 2022. While the order of frequency has changed, four of the five most frequent offenses have remained the same.

Figure 42: Top 5 Felony Convictions

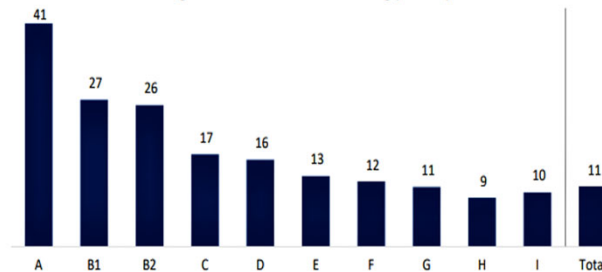
FY 2013	FY 2022
•Breaking and Entering Buildings - Class H	•Possess Methamphetamine - Class I
•Obtain Property by False Pretense - Class H	•Possession of a Firearm by a Felon - Class G
•Larceny of Property (worth more than \$1,000) - Class H	•Breaking and Entering Buildings - Class H
•Possession of a Firearm by a Felon - Class G	•Obtain Property by False Pretense (worth less than \$100,000) - Class H
•Possess Cocaine - Class I	•Larceny of Property (worth more than \$1,000) - Class H

SOURCE: NC Sentencing and Policy Advisory Commission, FY 2013 – FY 2022 Statistical Report Data

## Time to Sentencing

Time to sentencing refers to the amount of time between the date the warrant was served for the most serious offense and the date the sentence was imposed. As Figure 2 shows, the median time to sentencing for all felonies was 11 months. Class A convictions had the longest time to sentencing (41 months). Class H convictions had the shortest time to sentencing at 9 months.

Figure 2: Median Time to Sentencing (Months)



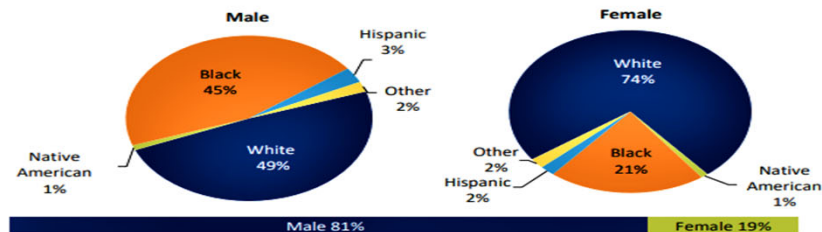
Note: Of the 25,760 felony convictions, 29 with negative time to sentencing values were excluded.  
SOURCE: NC Sentencing and Policy Advisory Commission, FY 2022 Felony Statistical Report Data

# Men (but usually not old men) commit most crimes...

## OFFENDER CHARACTERISTICS

This section provides a breakdown of convictions by offenders' sex, race, and age. Of the 25,760 felony convictions in FY 2022, 81% were for males (see Figure 6). Fifty-four percent (54%) of offenders were White, 40% were Black, and a small percentage were Hispanic (3%), Native American (1%), or Other (2%).

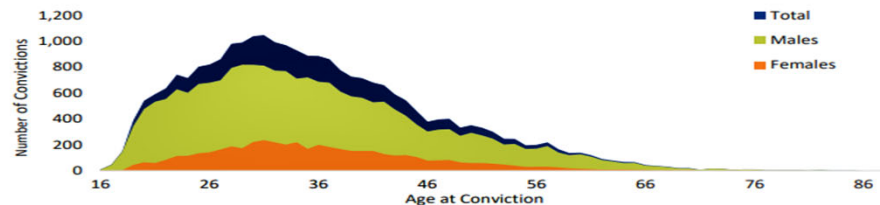
Figure 6: Convictions by Sex and Race



SOURCE: NC Sentencing and Policy Advisory Commission, FY 2022 Felony Statistical Report Data

Based on age at conviction, 4% of felony convictions were for offenders under the age of 21, 14% were 21-25 years of age, 18% were 26-30 years of age, 34% were 31-40 years of age, 19% were 41-50 years of age, and 11% were 51 years of age or older. The average age at conviction was 36 years. Figure 7 shows the volume of male and female offenders by age distribution and illustrates that the volume of offenders peaks in the late-twenties, and then generally declines as age increases.

Figure 7: Distribution of Convictions by Age



# Innovative Courts of Brunswick County

Traffic Court

Felony District Court

Treatment Courts

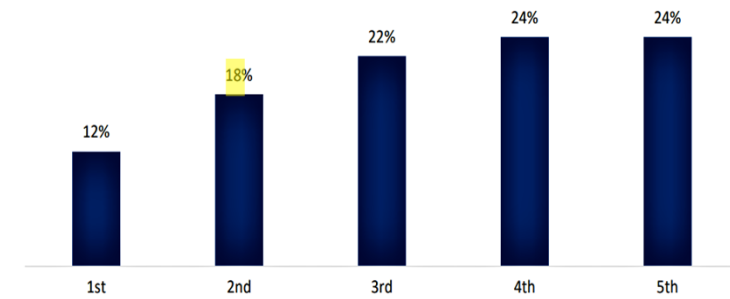
- Drugs
- Mental Health



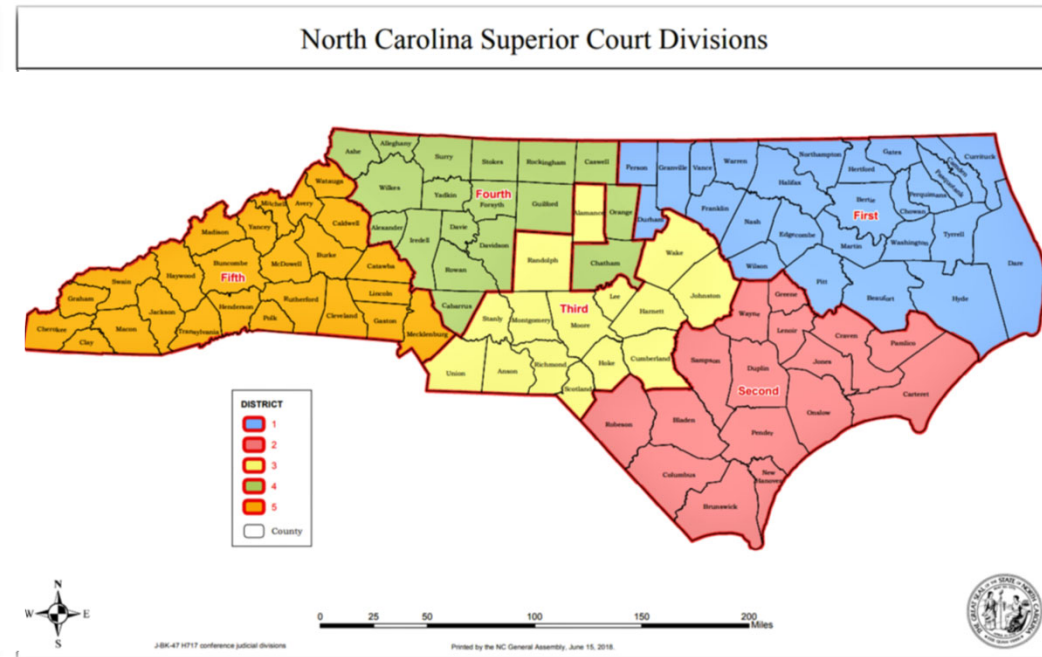
### E. Convictions by Judicial Division and District

Figure 4 shows the variation in the distribution of convictions across the state. Figure 5 provides the total number of felony convictions for each judicial district. (See Appendix A for a map of judicial divisions and districts and Appendix C for a detailed table of the total number of felony convictions for each judicial division and district within the context of county population.)<sup>5</sup>

Figure 4: Convictions by Judicial Division



SOURCE: NC Sentencing and Policy Advisory Commission, FY 2021 Felony Statistical Report Data



## Percentage of Total Convictions by Judicial Division

# Convictions by Judicial Division AND District 13B (Brunswick County)

Appendix B, Table 1: Convictions by Judicial Division and District

Judicial Division, Judicial District, and County		Felony Convictions	Convictions per 1,000 Adults (18+)
<b>First Judicial Division</b>		<b>2,849</b>	<b>3</b>
<b>District 1</b>	Camden	6	1
	Chowan	37	3
	Currituck	41	2
	Dare	111	4
	Gates	14	1
	Pasquotank	79	2
	Perquimans	26	2
	<b>Total</b>	<b>314</b>	<b>2</b>
<b>District 2</b>	Beaufort	236	7
	Hyde	11	3
	Martin	102	6
	Tyrrell	15	6
	Washington	36	4
	<b>Total</b>	<b>400</b>	<b>6</b>
<b>District 3A</b>	Pitt	556	4
	<b>Total</b>	<b>556</b>	<b>4</b>
<b>District 6A</b>	Halifax	84	2
	<b>Total</b>	<b>84</b>	<b>2</b>
<b>District 6B</b>	Bertie	20	1
	Hertford	41	3
	Northampton	8	1
	<b>Total</b>	<b>69</b>	<b>2</b>
<b>District 7A</b>	Nash	236	3
	<b>Total</b>	<b>236</b>	<b>3</b>
<b>District 7B,C</b>	Edgecombe	116	3
	Wilson	228	4
	<b>Total</b>	<b>344</b>	<b>4</b>
<b>District 9</b>	Franklin	191	3
	Granville	102	2
	Person	113	4
	Vance	101	3
	Warren	37	2
	<b>Total</b>	<b>544</b>	<b>3</b>
<b>District 14</b>	Durham	302	1
	<b>Total</b>	<b>302</b>	<b>1</b>
<b>Second Judicial Division</b>		<b>4,088</b>	<b>4</b>
<b>District 3B</b>	Carteret	230	4
	Craven	386	5
	Pamlico	37	4
	<b>Total</b>	<b>653</b>	<b>5</b>

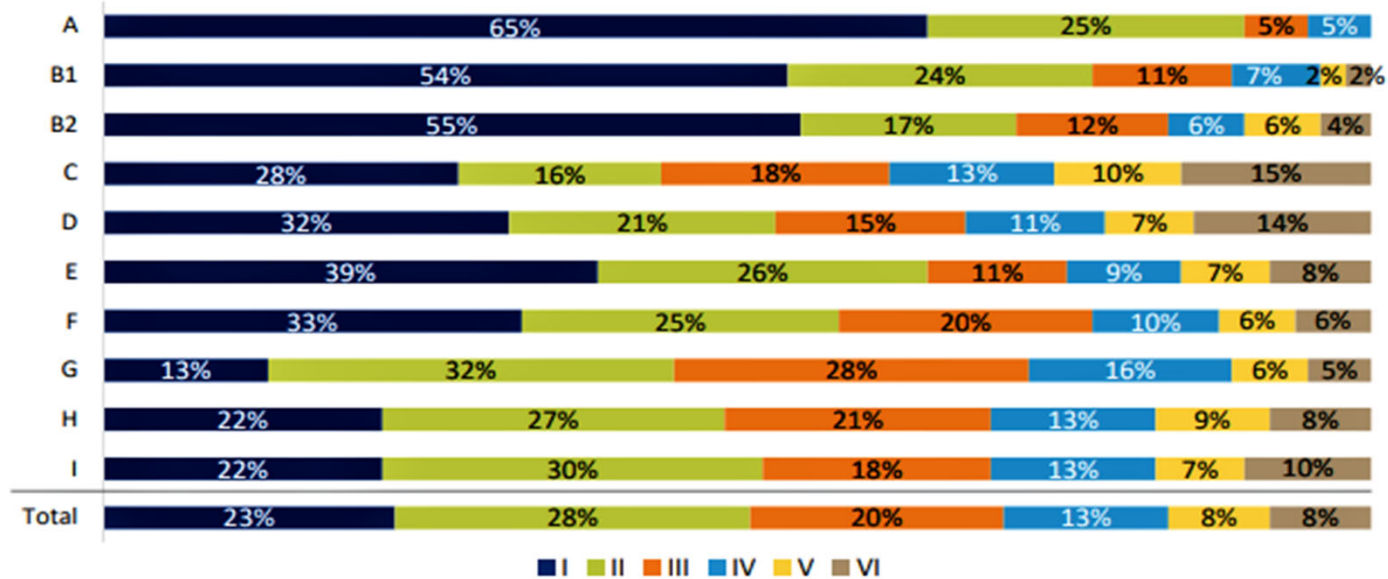
Judicial Division, Judicial District, and County		Felony Convictions	Convictions per 1,000 Adults (18+)
<b>District 4A</b>	Duplin	212	6
	Jones	30	4
	Onslow	471	3
	Sampson	261	6
	<b>Total</b>	<b>974</b>	<b>4</b>
<b>District 5</b>	New Hanover	642	3
	Pender	124	2
	<b>Total</b>	<b>766</b>	<b>3</b>
<b>District 8A</b>	Greene	51	3
	Lenoir	169	4
	<b>Total</b>	<b>220</b>	<b>4</b>
<b>District 8B</b>	Wayne	415	5
	<b>Total</b>	<b>415</b>	<b>5</b>
<b>District 13A</b>	Bladen	92	4
	Columbus	264	7
	<b>Total</b>	<b>356</b>	<b>6</b>
<b>District 13B</b>	Brunswick	565	4
	<b>Total</b>	<b>565</b>	<b>4</b>
<b>District 16B</b>	Robeson	139	2
	<b>Total</b>	<b>139</b>	<b>2</b>
<b>Third Judicial Division</b>		<b>5,929</b>	<b>3</b>
<b>District 10</b>	Wake	1,537	2
	<b>Total</b>	<b>1,537</b>	<b>2</b>
<b>District 11A</b>	Harnett	284	3
	Lee	187	4
	<b>Total</b>	<b>471</b>	<b>3</b>
<b>District 11B</b>	Johnston	669	4
	<b>Total</b>	<b>669</b>	<b>4</b>
<b>District 12</b>	Cumberland	801	3
	<b>Total</b>	<b>801</b>	<b>3</b>
<b>District 15A</b>	Alamance	521	4
	<b>Total</b>	<b>521</b>	<b>4</b>
<b>District 16A</b>	Anson	86	5
	Richmond	155	5
	Scotland	88	3
	<b>Total</b>	<b>329</b>	<b>4</b>
<b>District 19B</b>	Randolph	289	3
	<b>Total</b>	<b>289</b>	<b>3</b>
<b>District 19D</b>	Hoke	93	2
	Moore	335	4
	<b>Total</b>	<b>428</b>	<b>4</b>

continued



# Felony Convictions by Prior Record Level

Figure 1: Distribution of Convictions by Prior Record Level



Note: Of the 21,293 felony convictions in FY 2021, 314 (or 1.5%) were excluded from this table.  
 SOURCE: NC Sentencing and Policy and Advisory Commission, FY 2021 Felony Statistical Report Data



## SUPERIOR COURT PENDING CIVIL CASES

Comparison of Cases as of February 29, 2020, March 31, 2021,  
and May 31, 2023

Prepared by  
Research, Policy, and Planning

### Total Pending Superior Court Civil Cases County Comparison - Sorted Alphabetically

County	Superior Court Civil Cases Pending as of 2/29/2020	Superior Court Civil Cases Pending as of 3/31/2021	Superior Court Civil Cases Pending as of 5/31/2023	% Change from CY2020 to CY2021	% Change from CY2021 to Current	% Change from CY2020 to Current
Alamance	168	220	236	31.0%	7.3%	40.5%
Alexander	19	19	26	0.0%	36.8%	36.8%
Alleghany	10	14	24	40.0%	71.4%	140.0%
Anson	35	44	44	25.7%	0.0%	25.7%
Ashe	43	43	17	0.0%	-60.5%	-60.5%
Avery	25	29	24	16.0%	-17.2%	-4.0%
Beaufort	72	78	61	8.3%	-21.8%	-15.3%
Bertie	31	41	27	32.3%	-34.1%	-12.9%
Bladen	47	60	90	27.7%	50.0%	91.5%
Brunswick	267	333	312	24.7%	-6.3%	16.9%
Buncombe	522	619	739	18.6%	19.4%	41.6%
Burke	67	83	66	23.9%	-20.5%	-1.5%
Cabarrus	269	270	257	0.4%	-4.8%	-4.5%
Caldwell	90	78	80	-13.3%	2.6%	-11.1%
Camden	8	6	12	-25.0%	100.0%	50.0%
Carteret	135	161	141	19.3%	-12.4%	4.4%
Caswell	25	35	25	40.0%	-28.6%	0.0%
Catawba	174	195	264	12.1%	35.4%	51.7%
Chatham	48	54	46	12.5%	-14.8%	-4.2%
Cherokee	70	73	95	4.3%	30.1%	35.7%
Chowan	13	16	19	23.1%	18.8%	46.2%
Clay	39	44	52	12.8%	18.2%	33.3%
Cleveland	130	171	168	31.5%	-1.8%	29.2%
Columbus	130	188	142	44.6%	-24.5%	9.2%
Craven	112	195	199	74.1%	2.1%	77.7%
Cumberland	440	460	389	4.5%	-15.4%	-11.6%
Currituck	48	54	48	12.5%	-11.1%	0.0%
Dare	117	114	93	-2.6%	-18.4%	-20.5%
Davidson	166	230	187	38.6%	-18.7%	12.7%



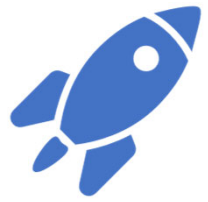
## SUPERIOR COURT PENDING CIVIL CASES

Comparison of Cases as of February 29, 2020, March 31, 2021,  
and May 31, 2023

Prepared by  
Research, Policy, and Planning

County	Superior Court Civil Cases Pending as of 2/29/2020	Superior Court Civil Cases Pending as of 3/31/2021	Superior Court Civil Cases Pending as of 5/31/2023	% Change from CY2020 to CY2021	% Change from CY2021 to Current	% Change from CY2020 to Current
Wayne	126	149	133	18.3%	-10.7%	5.6%
Wilkes	45	73	56	62.2%	-23.3%	24.4%
Wilson	225	253	222	12.4%	-12.3%	-1.3%
Yadkin	21	25	43	19.0%	72.0%	104.8%
Yancey	27	23	10	-14.8%	-56.5%	-63.0%
<b>Total</b>	<b>12,683</b>	<b>15,123</b>	<b>14,562</b>	<b>19.2%</b>	<b>-3.7%</b>	<b>14.8%</b>

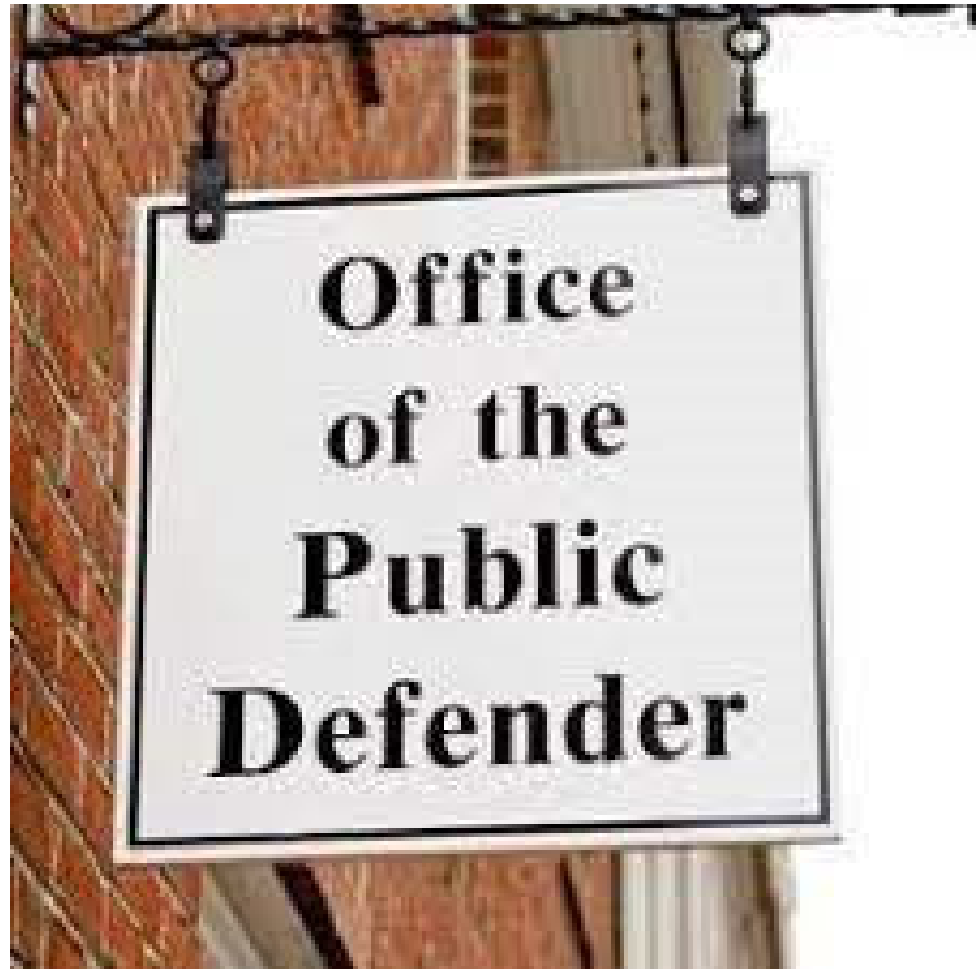
# Total Pending Superior Court Civil Cases



The Future



The Future of  
Representation  
in Brunswick  
County



# Treatment Court



Why is Brunswick County growing so fast?







Blame Highway 211....

# Census Data over 10 year period

---

- Bladen                      2011= 35,190                      2021= 29,446
  - Columbus                      2011= 58,098                      2021=50,625
  - Brunswick                      2011= 107,431                      2021=136,694
- 
- \*\*Brunswick population in July 2022 was 153,064 or 12% increase in 15 months!
  - \*\*Brunswick population is now 5 times larger than Bladen and 3 times the size of Columbus...and growing

# In search of an identity

---

Brunswick County is  
bedroom community to  
Wilmington, NC and  
Myrtle Beach, SC

Recently discovered  
location with beautiful  
beaches, great golf and  
low taxes, but no real  
history.....



Old Baldy Lighthouse

