



NORTH CAROLINA

Department of Transportation

PRESENTED TO SOUTHPORT - OAK ISLAND
CHAMBER OF COMMERCE ON JULY 21, 2022



Brunswick County Transportation

Chad Kimes
Anthony Law
Trevor Carroll

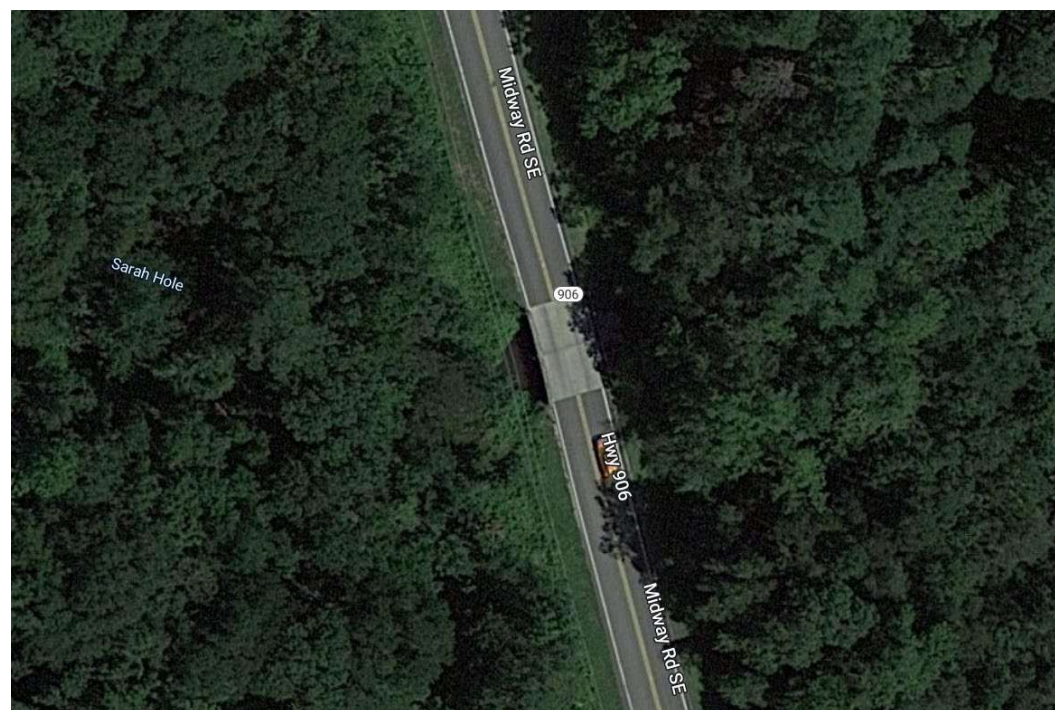
Division Engineer
Division Construction Engineer
Assistant Division Construction Engineer

July 21, 2022

Bridge Projects

LET = "THE DATE
THE DEPARTMENT
RECEIVES AND
OPENS BIDS"

- | | |
|--|-------------|
| #104 over Middle Swamp on Midway Road (NC 906 | (Let 7 '22) |
| #11 over Orton Creek on NC 87 (B-5627) | (Let 7 '25) |
| #23 over Sarah Hole on Midway Road (NC 906) | (Let 7 '26) |
| #22 over Mercers Mill Pond on Sunset Harbor Road | (Let 7 '30) |

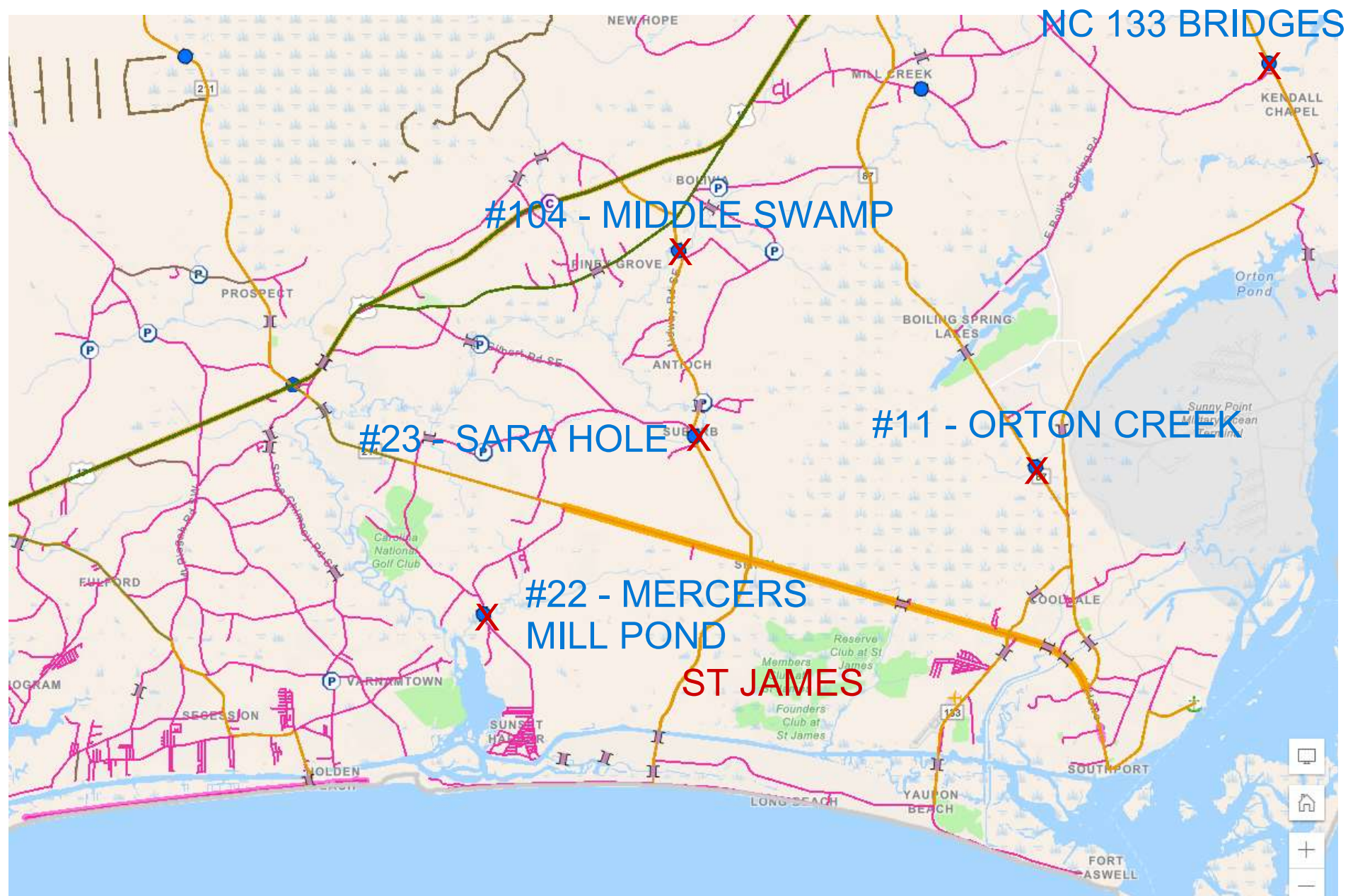


BR-0139 - NC 133 Bridges

Let April 2024



Brunswick County: Current and Proposed Construction in the area



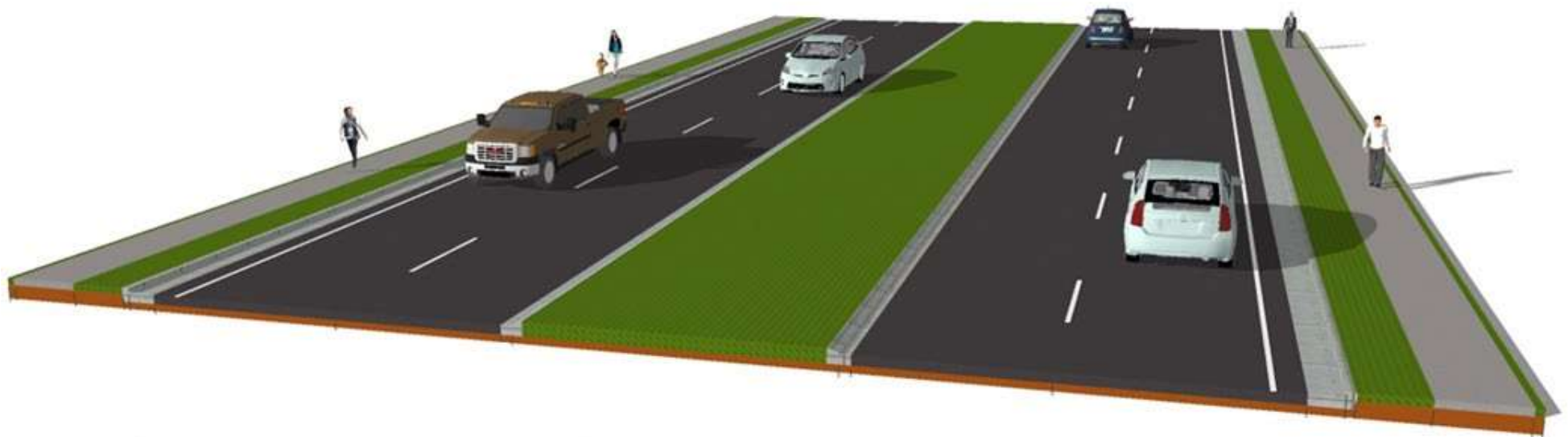
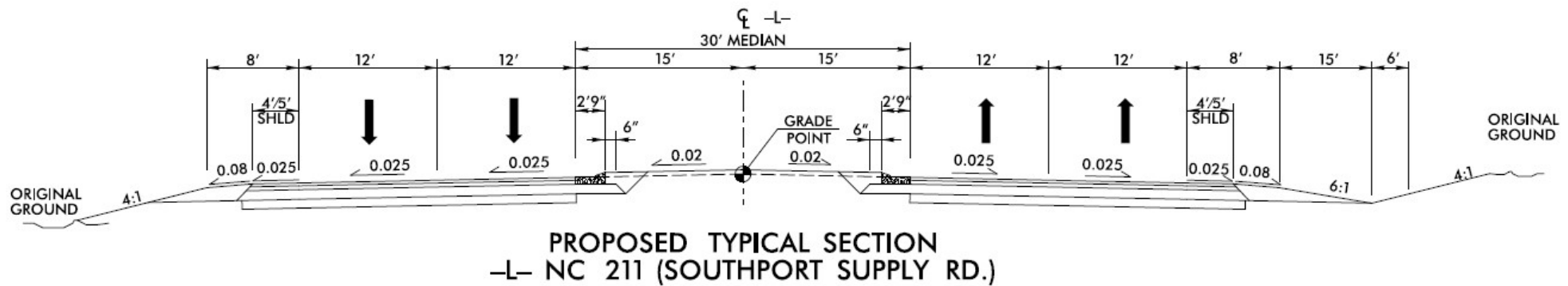
R-5021 - NC 211 Widening

- Anticipated completion: Fall 2026
- Current activity: clear vegetation, relocate utilities, and install erosion control measures



R-5021 - Typical Sections

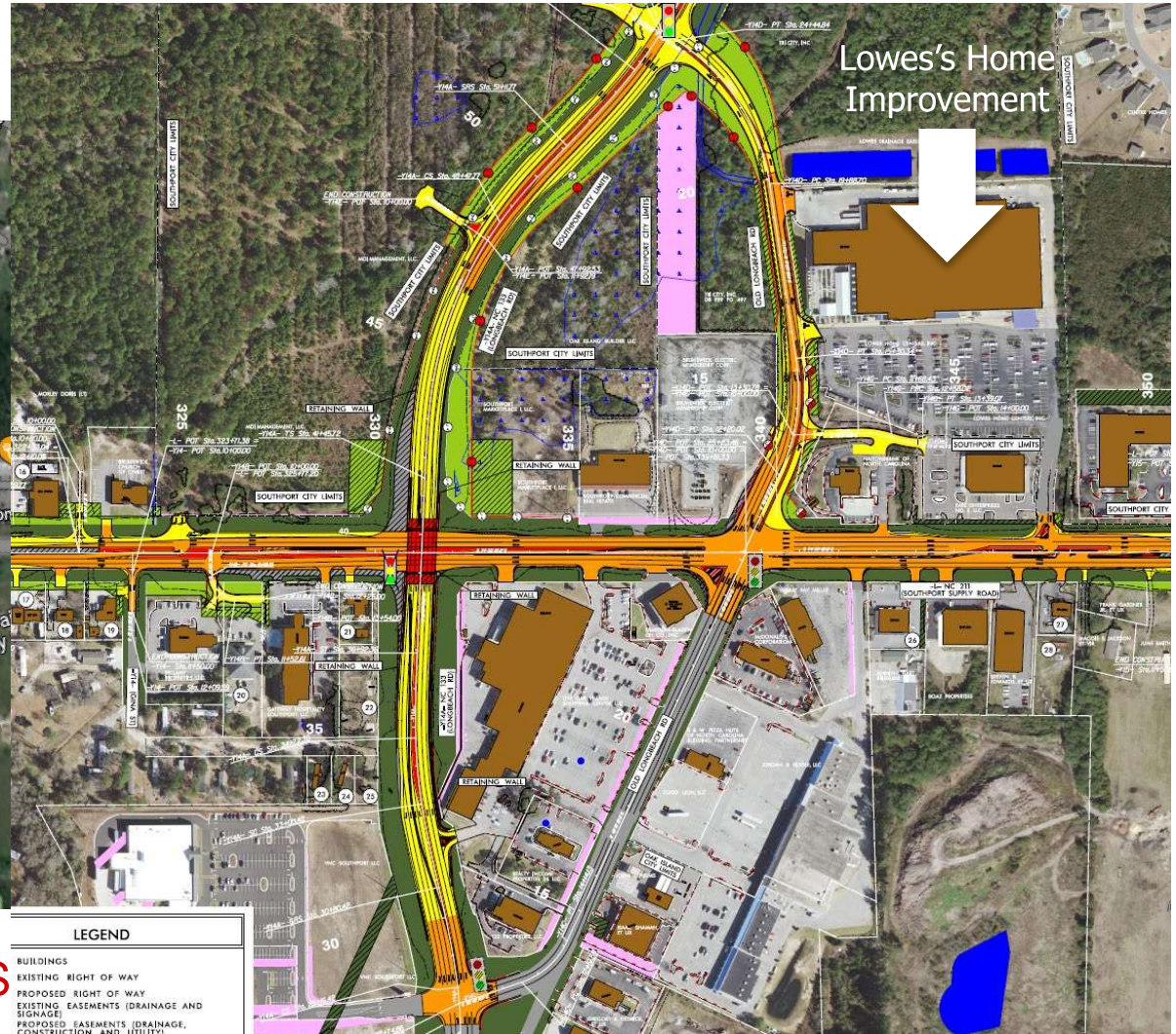
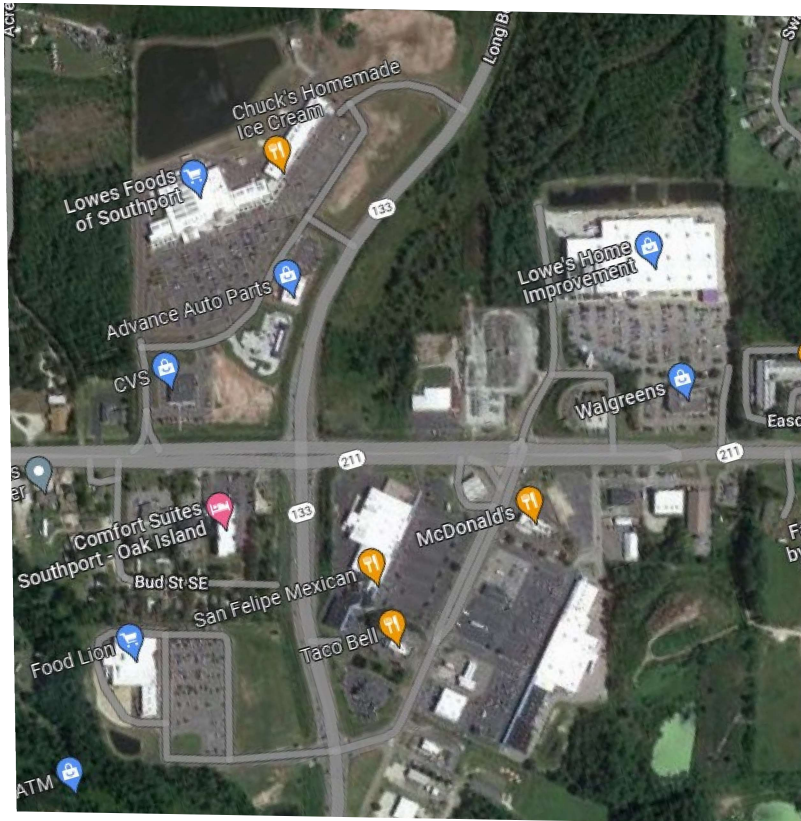
Near Southport - Walmart to NC 87



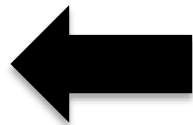
Looking from Southport,
Towards Midway at canal crossing



R-5021 - NC 133/NC 211



**NEW INTERCHANGE / OVERPASS
AT NC 211 AND LONG BEACH RD**



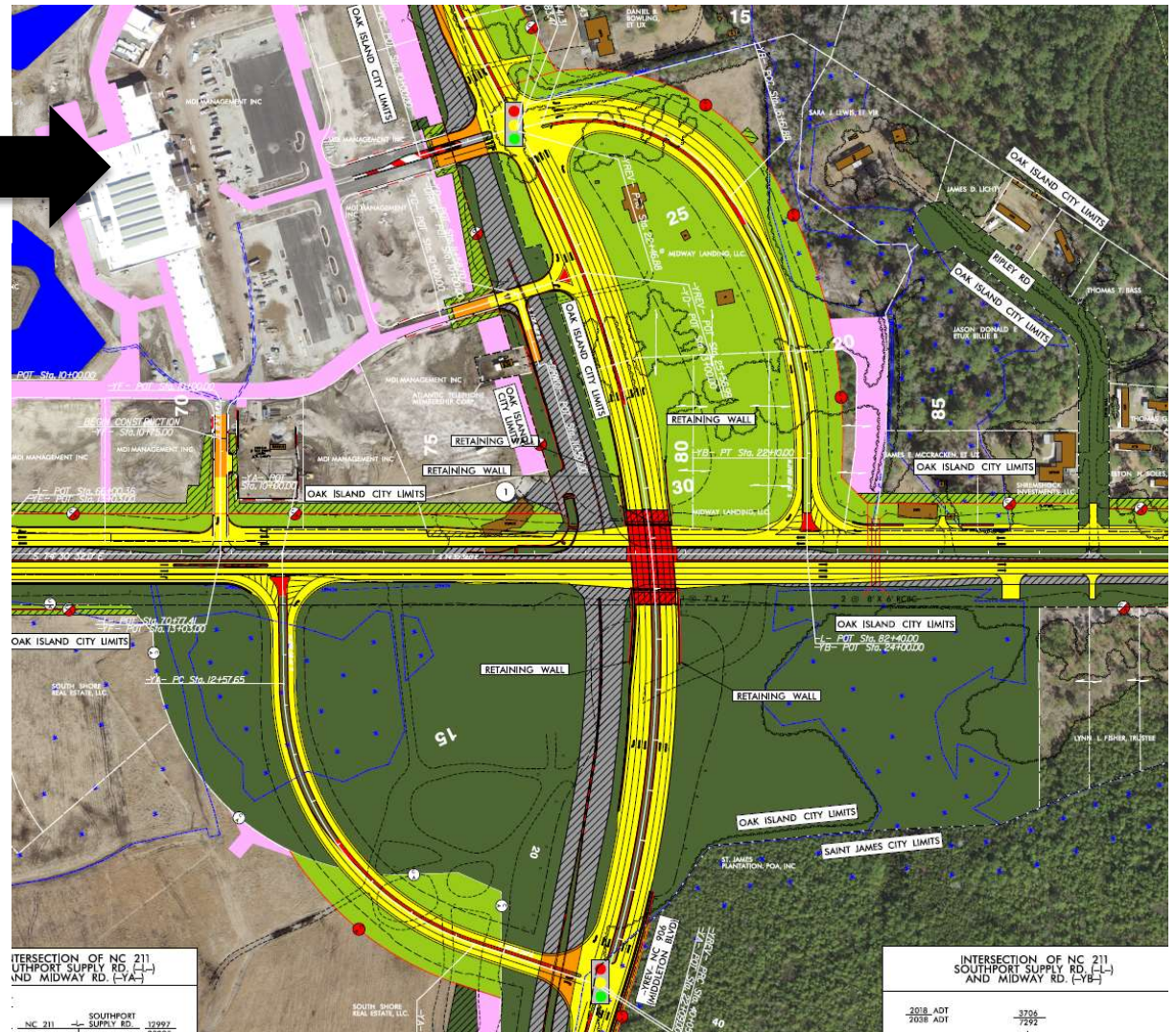
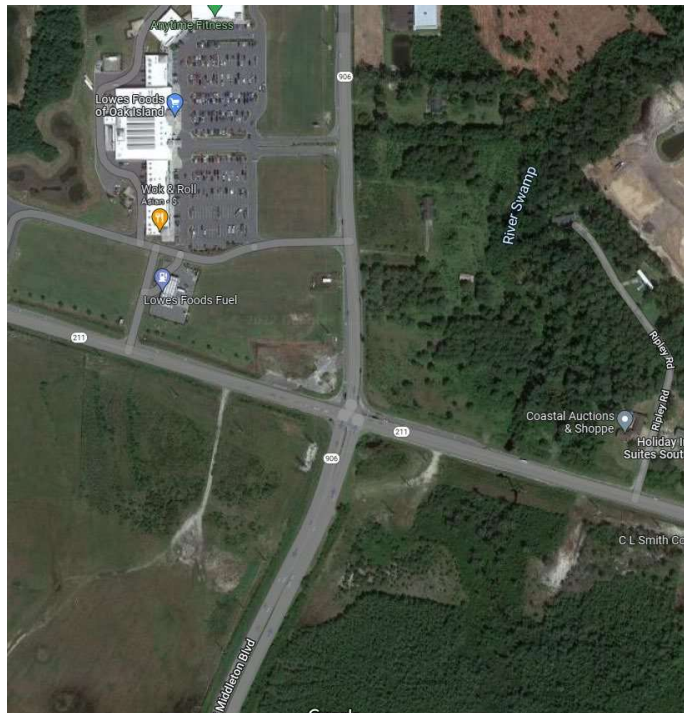
NC 211 leaving Southport

BRIDGE OVER BEAVER DAM SWAMP, LOOKING
WEST ALONG NC 211 TOWARD ST. JAMES DRIVE
AND MAIN GATE



R-5021 – NC 906/NC 211

Lowes
Foods



**NEW INTERCHANGE /
OVERPASS AT NC 211 AND
MIDWAY / MIDDLETON BLVD.**

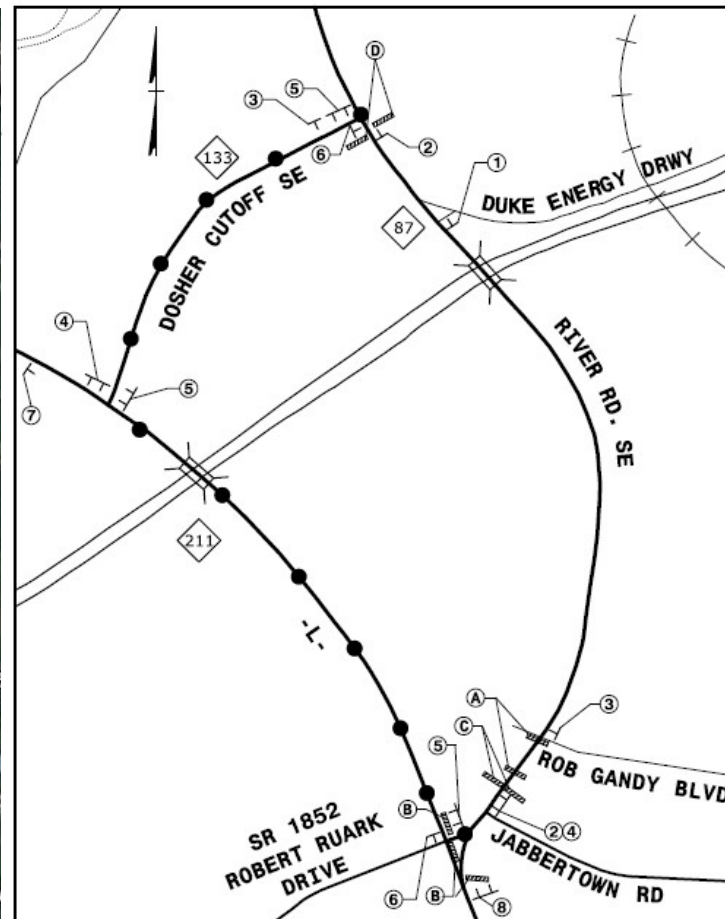
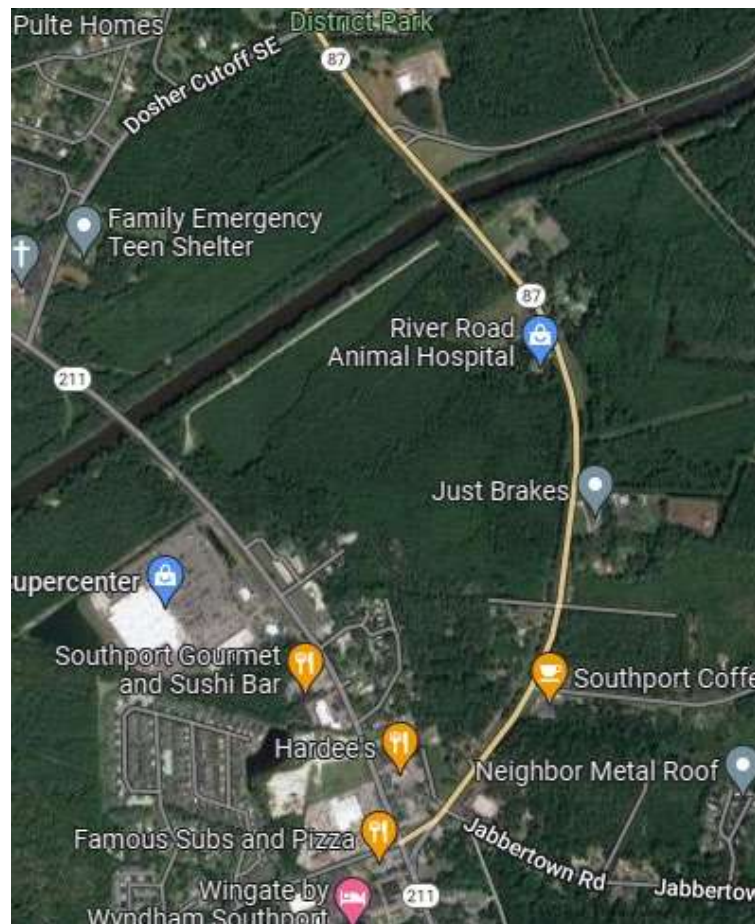
INTERSECTION AT NC 211 AND MIDWAY / MIDDLETON BLVD.



Construction Plan

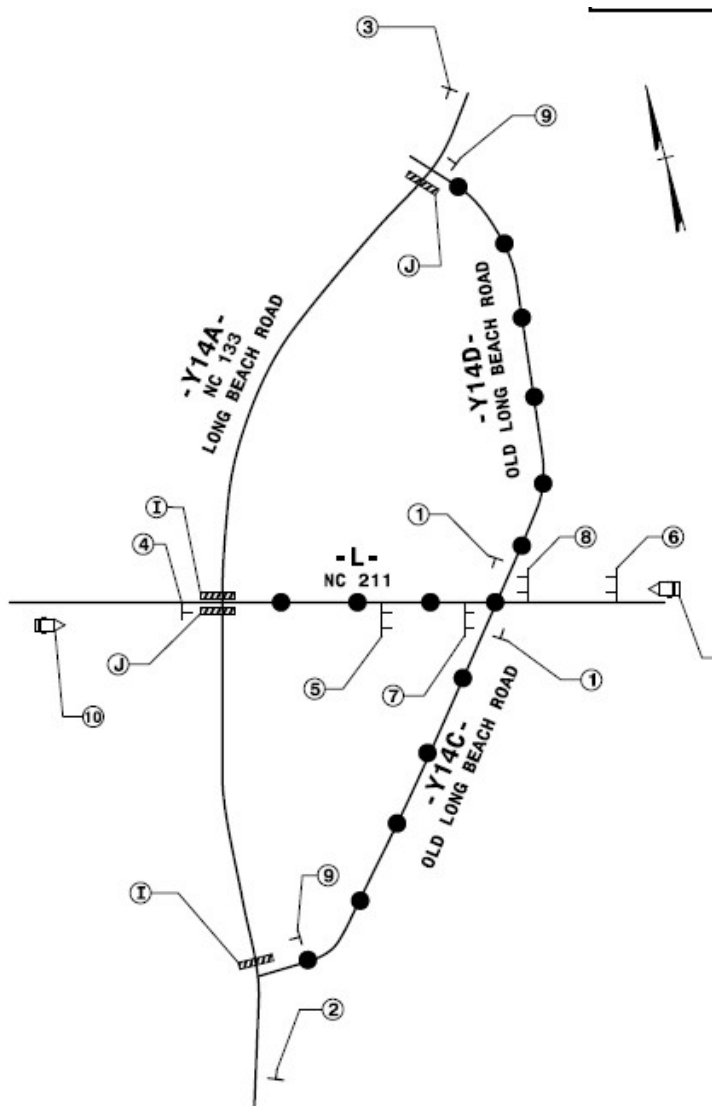
Detours

- **Approximate Date of Detour:**
Off Season
- **Approximate Duration:**
Approximately a one-week Closure: Sunday from 7 pm to Friday 6 am
- **For the installation of a large pipe beneath NC 87**

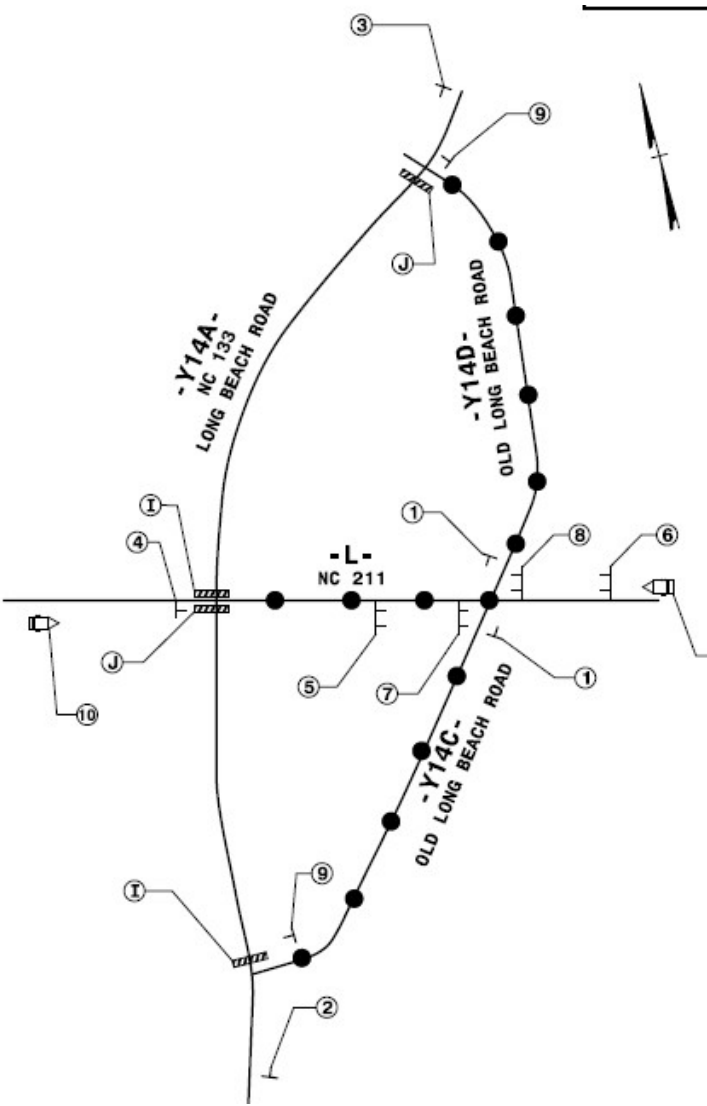
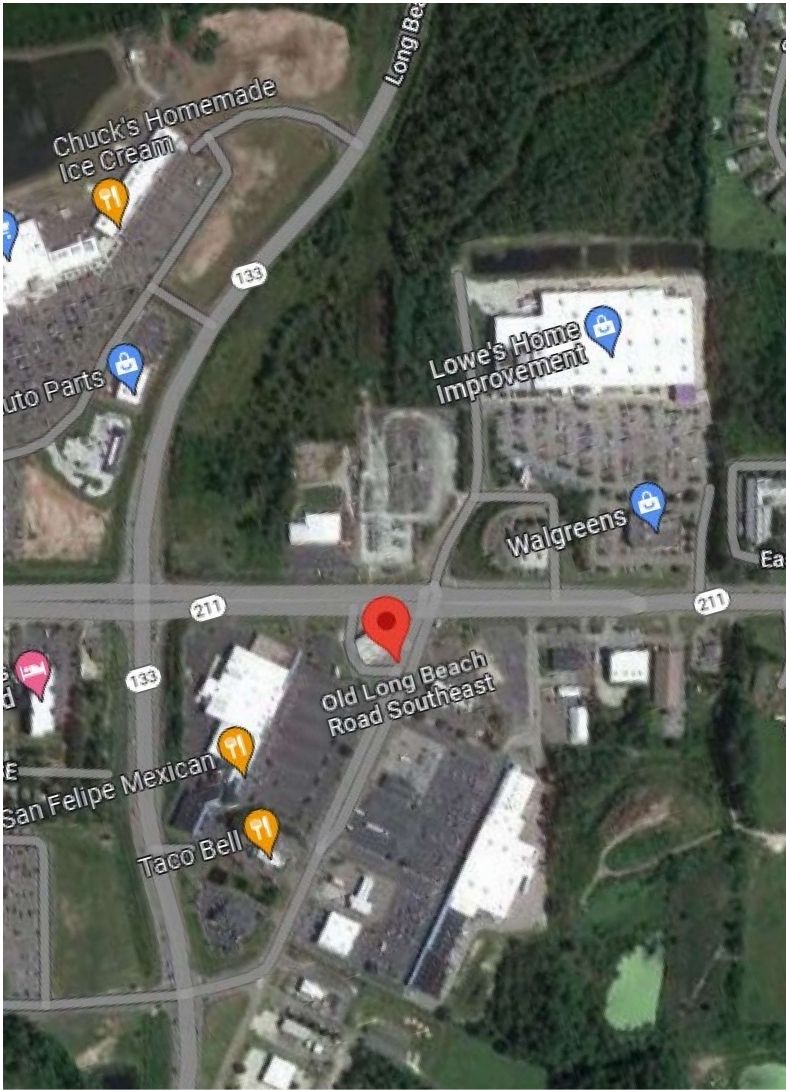


Construction Plan

Detours



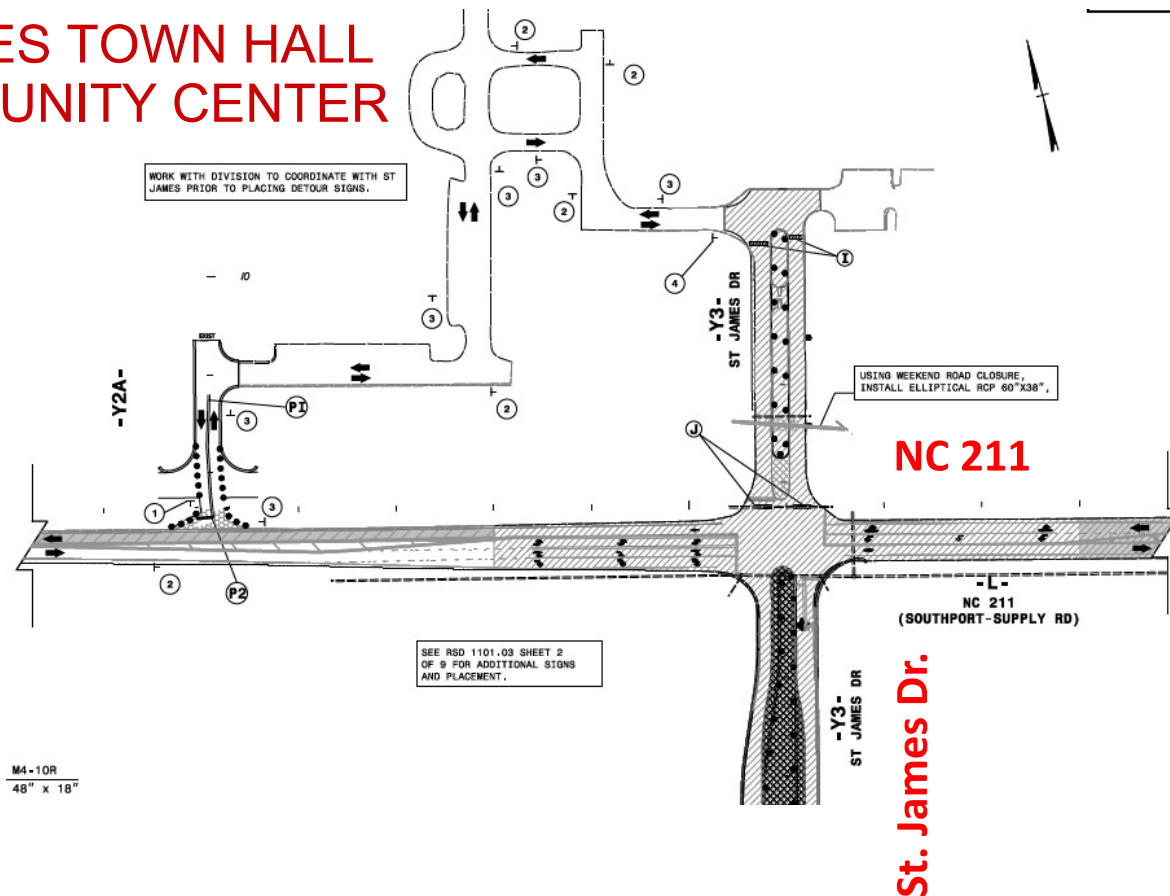
- **Approximate Date of Detour:**
September 2023
- **Approximate Duration:**
Approximately 1 year
- **For the construction of the**
proposed bridge over NC 211



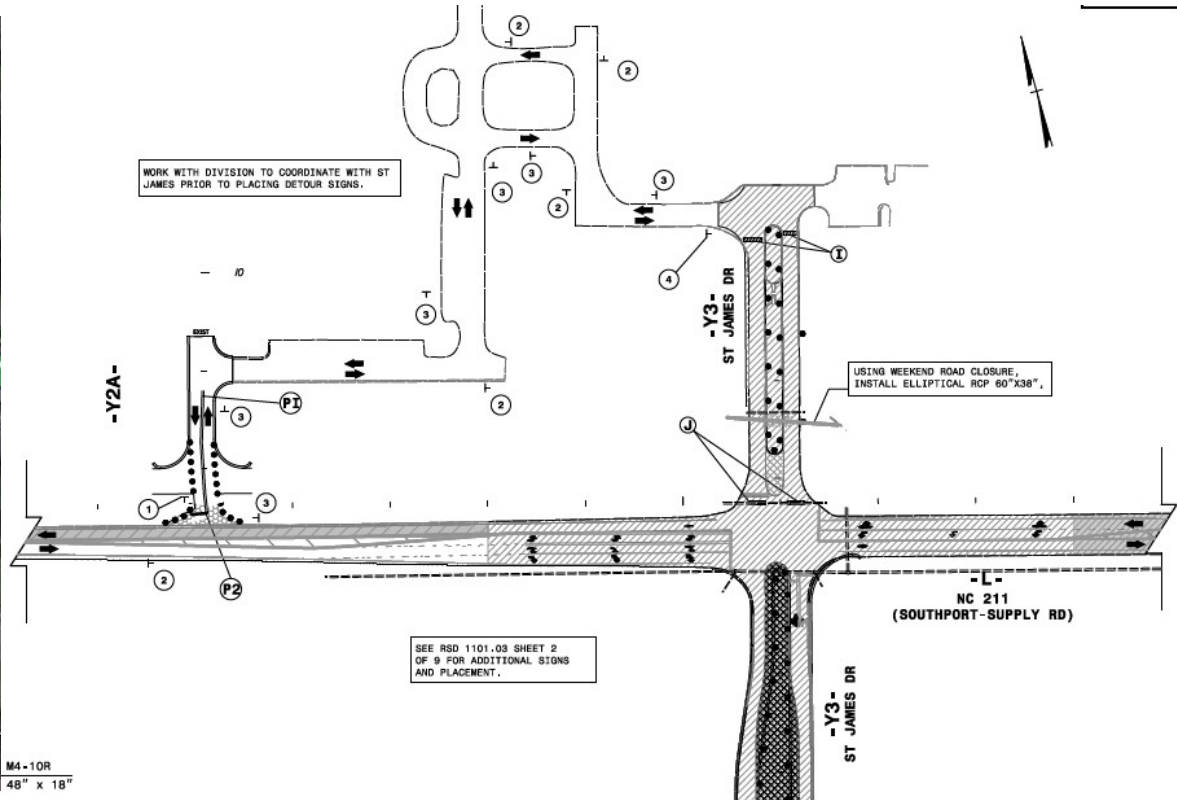
Construction Plan

Detours

SAINT JAMES TOWN HALL
AND COMMUNITY CENTER



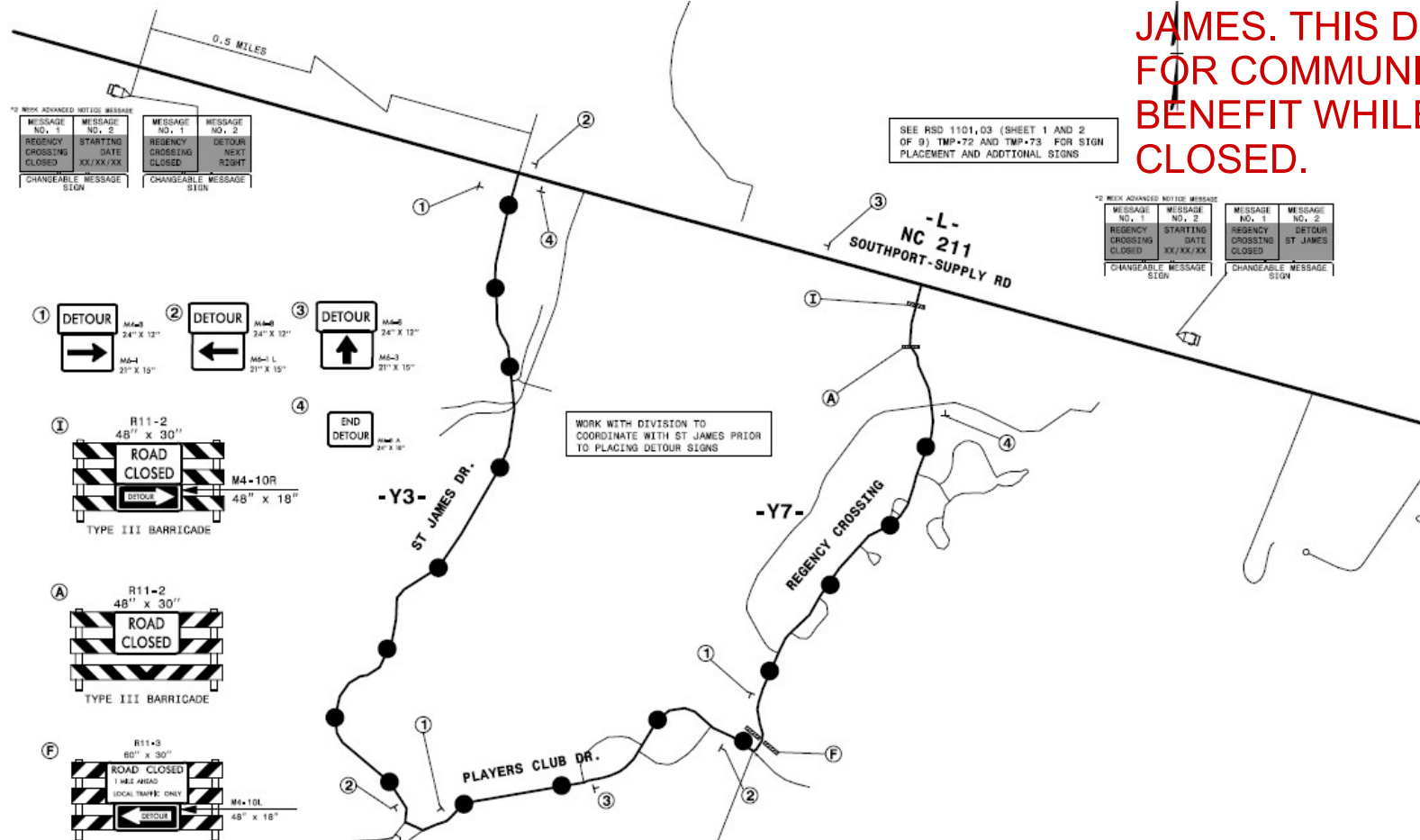
Approximate Date of Detour: At Discretion of the Contractor
Approximate Duration: Weekend Closure
For the installation of a large pipe beneath St. James Drive



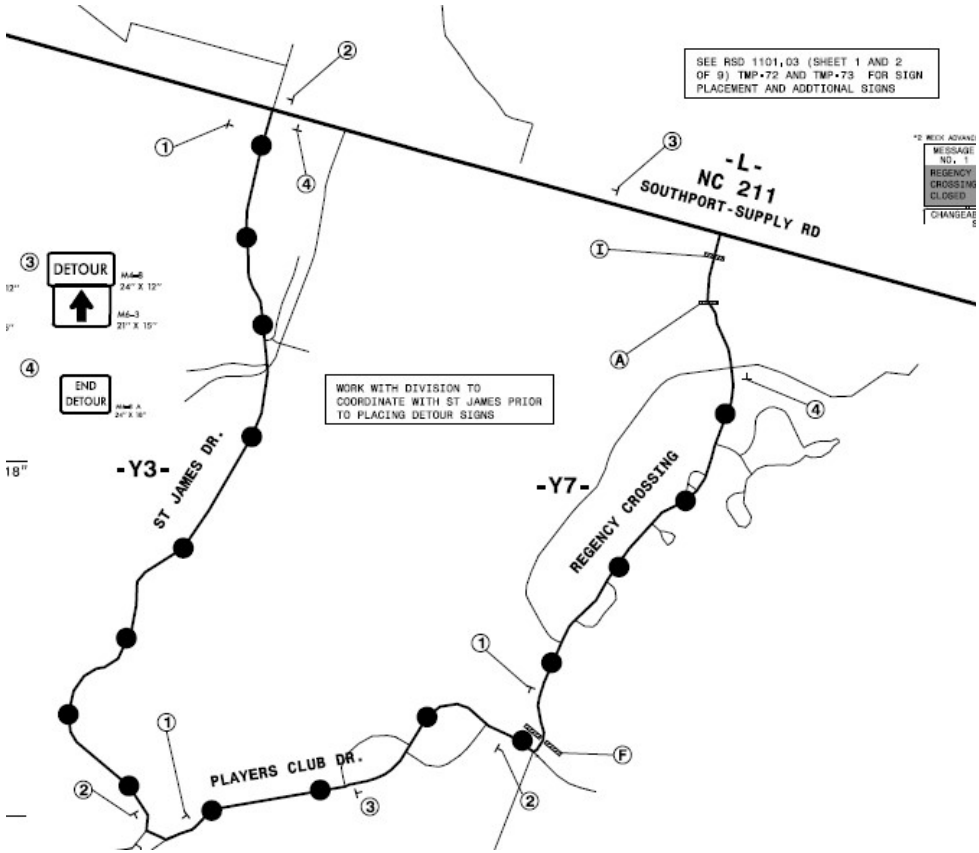
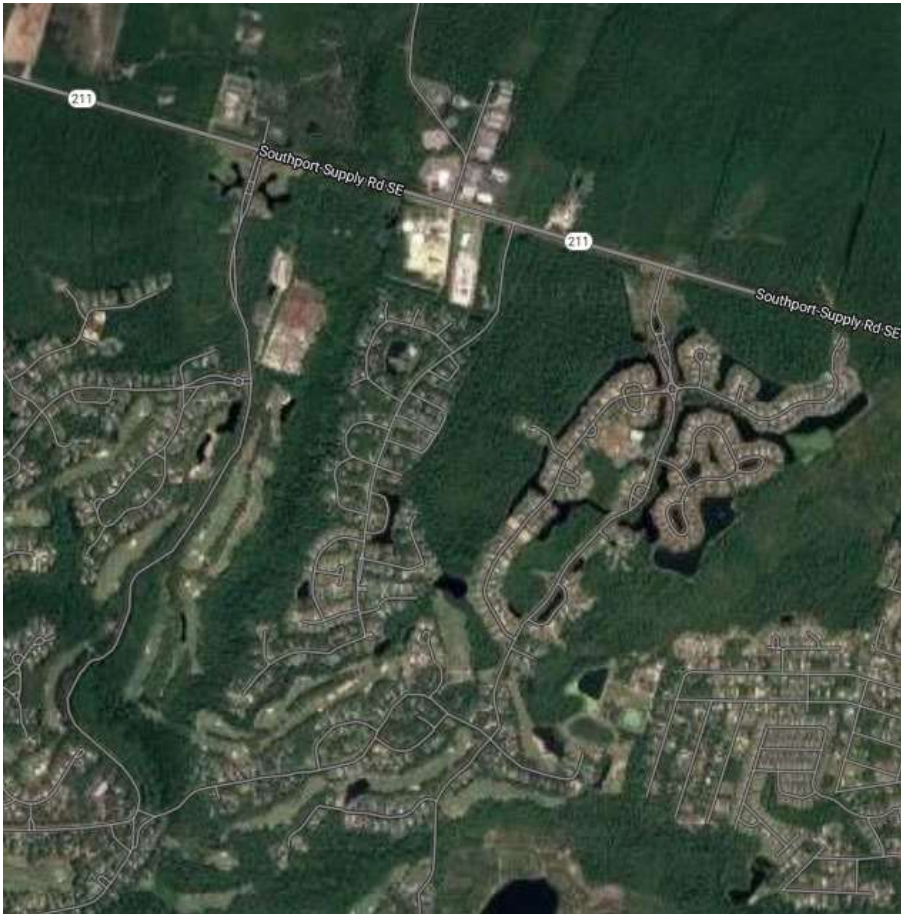
Construction Plan

Detours

REGENCY CROSSING CLOSURE - NO TRAFFIC WILL BE DETOURED FROM NC 211 INTO SAINT JAMES. THIS DETOUR IS FOR COMMUNITY BENEFIT WHILE GATE IS CLOSED.



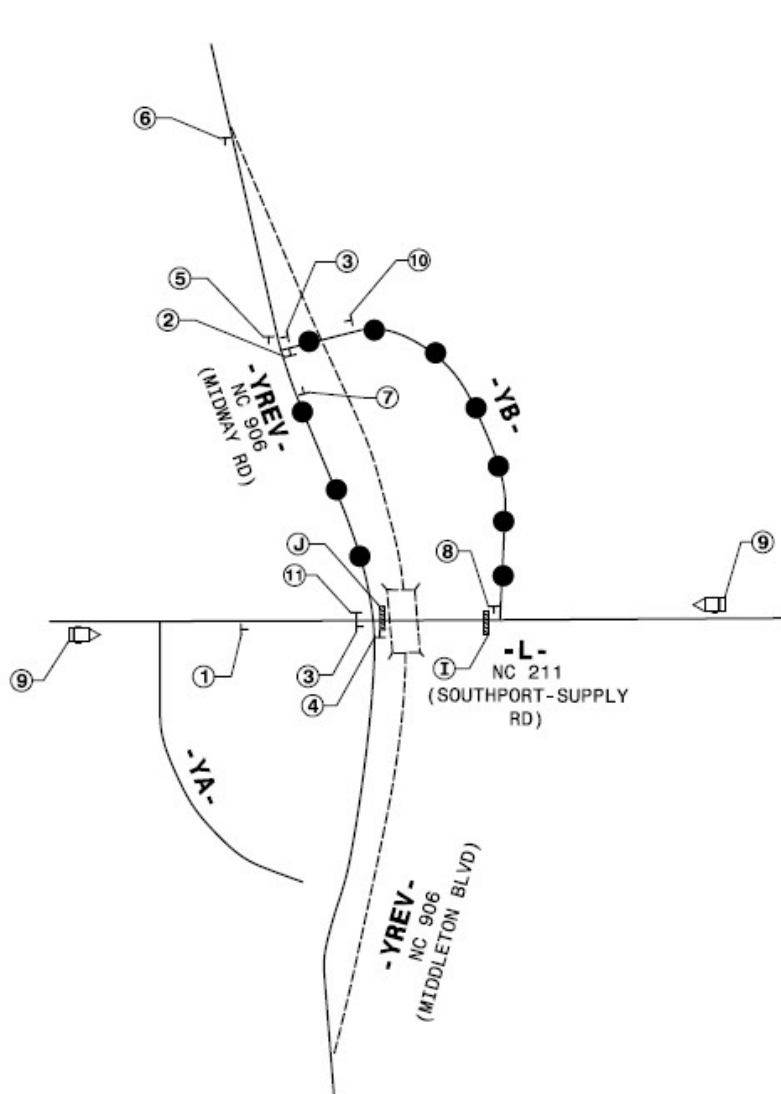
Approximate Date of Detour: At Discretion of the Contractor
Approximate Duration: 30 days for intersection improvements
For a pipe and driveway connection



Construction Plan

NC 211 AND MIDWAY /
MIDDELTON BLVD
INTERSECTION

Detours



- **Approximate Date of Detour:
At Discretion of Contractor**
- **Approximate Duration: 30-
minute intervals**
- **For setting of structural
components**

